



2,250 SQFT | 3-5 BEDROOMS | 3 BATHS

STAND OUT FEATURES

EXTERIOR

- James Hardie Siding
- Charming Bahama shutters on garage windows
- Fully sodded lawn with multi-zone Irrigation System
- Large screened porch with ceiling fan/light fixture

INTERIOR

- Stunning wainscoting in Foyer with coat closet
- Vaulted ceilings in the Great Room & Kitchen with accent beams
- Formal Dining Room/Office with coffered ceiling & wainscoting
- Butler's Pantry between Kitchen & Formal Dining room
- 4th Bedroom option in lieu of Formal Dining room
- Bonus Room or 5th bedroom comes with closet and bath

KITCHEN

- 42" maple cabinets with soft close doors & drawers
- Tile back splash with under cabinet lighting
- Granite countertops & Stainless steel farmhouse sink
- Whirlpool Stainless Steel Appliance Package: electric cooktop with range hood, dishwasher, wall oven & microwave combo
- Large pantry with barn door
- Cooktop granite island with decorative post legs

MASTER SUITE

- Located on the 1st Floor
- Presidential ceiling with ambient rope lighting
- Huge Walk-In closet with shelving

MASTER BATH

- Tiled master bath shower with mosaic accent strip, bench seat & storage niches
- Dual shower heads include a handheld & stationary
- Drop-in tub with tile surround & privacy glass window
- Dual sink vanity with coordinating framed mirrors
- Spa Upgrade option available!

RIPTIDE EXTRAS

- Multiple fireplace options from which to choose!
- Hardwood floors throughout the main living spaces
- Lyric Alarm & Comfort System controllable via app!
- Navien Tankless Gas Water Heater
- HERS Certified by RESNET for energy efficiency!
- Tons of storage in this plan!
- 7 1/4" baseboards throughout plus 3 1/4" door and window casings with custom window sills!

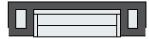
THE SAGAMORE

2,250 SQ. FT.

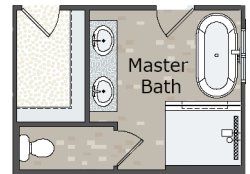
1ST FLOOR



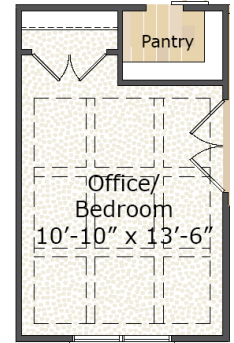
Fireplace Option #1
45" Dual Sided



Fireplace Option #2
45" Linear



Master Bath
Option #1



Office/4th Bedroom
Option #1

2ND FLOOR

